

WN-220R

150Mbps SOHO Wireless Router

AirLive WN-220R is the center of your home or office network. You can share a high-speed Internet connection with the flexibility, speed, security and simplicity! The WN-220R conforms to wireless 802.11b/g/n demand, and provides up to 150Mbps wireless speed. Its additional 4 Ethernet cable ports let you connect your whole wired and wireless devices together.

WN-220R also supports various ways for connecting to your Internet Service Provider, such as static IP, dynamic IP (DHCP), or PPPoE. Moreover, with the Setup Wizard provided in the bundle CD, you can simply connect your network-able device to the world in few minutes.

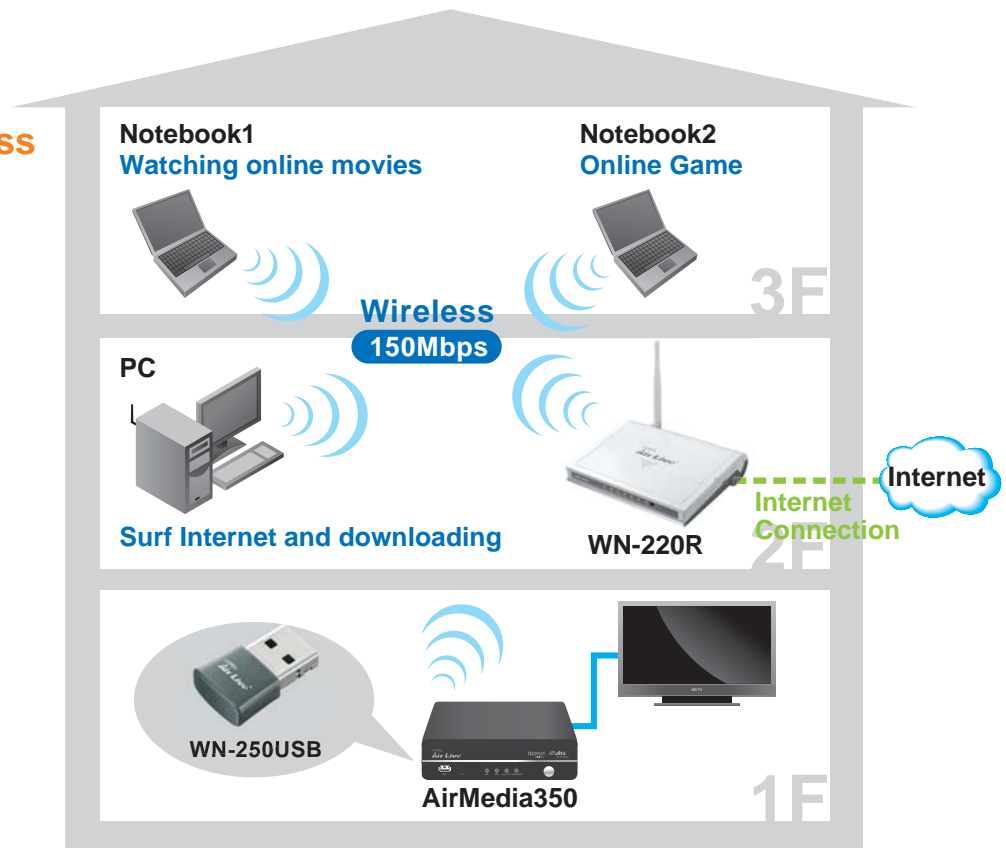


150Mbps

Fast Transfer Wireless Router

Enjoy your AirLive Wireless

Wireless High-Speed 150Mbps leads you to enjoy various applications. Seamlessly work with X-Box360, online game, download application or IPTV video streaming.



Manufacturer

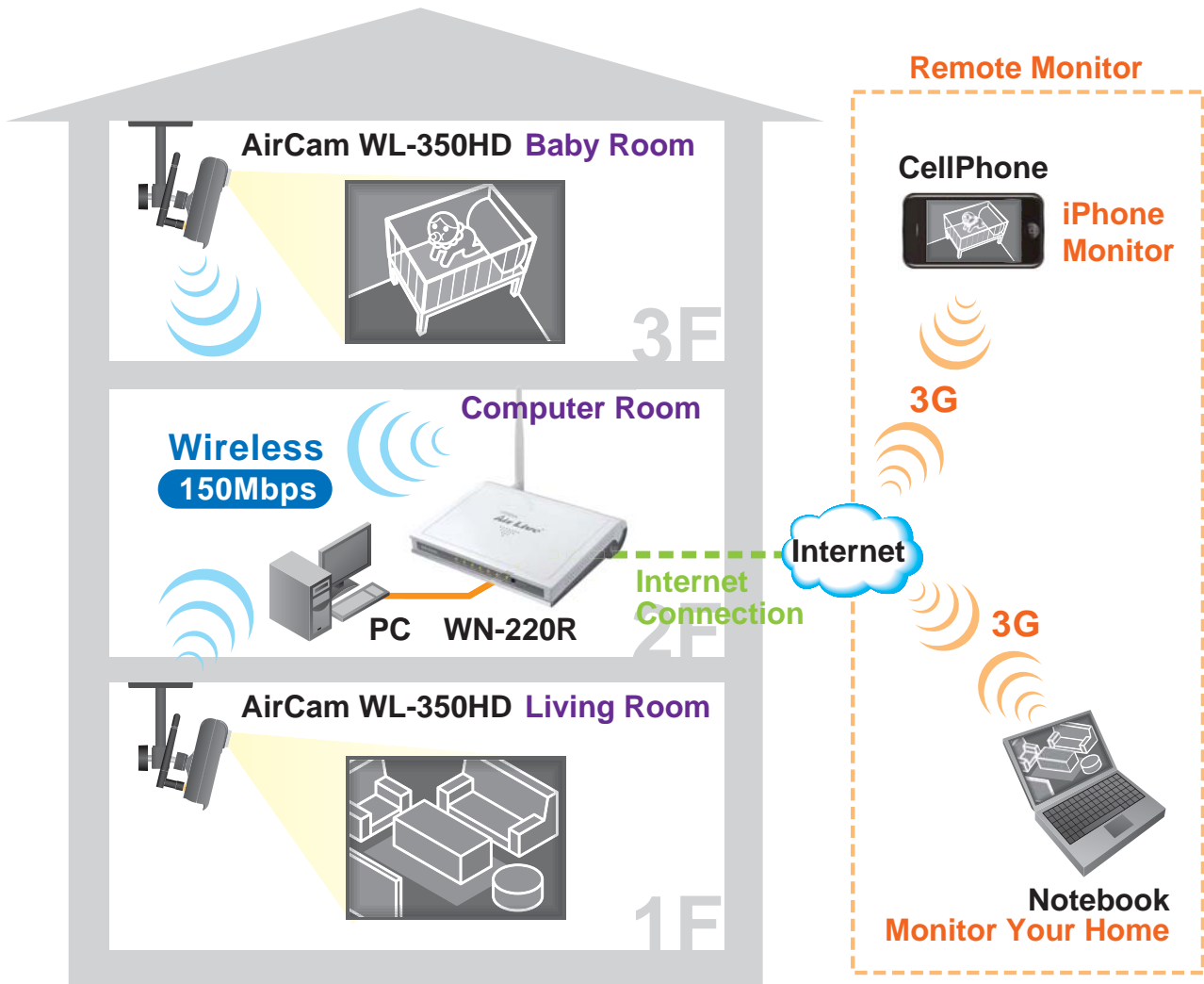
OvisLink Corp.

5F, No.96, Min-ChuanRd, Hsin-tien City, Taipei, Taiwan

www.airlive.com

Install your Wireless Camera with WN-220R

Airlive WN-220R meets the demand of bandwidth intensive applications such as HD camera or VGA camera.

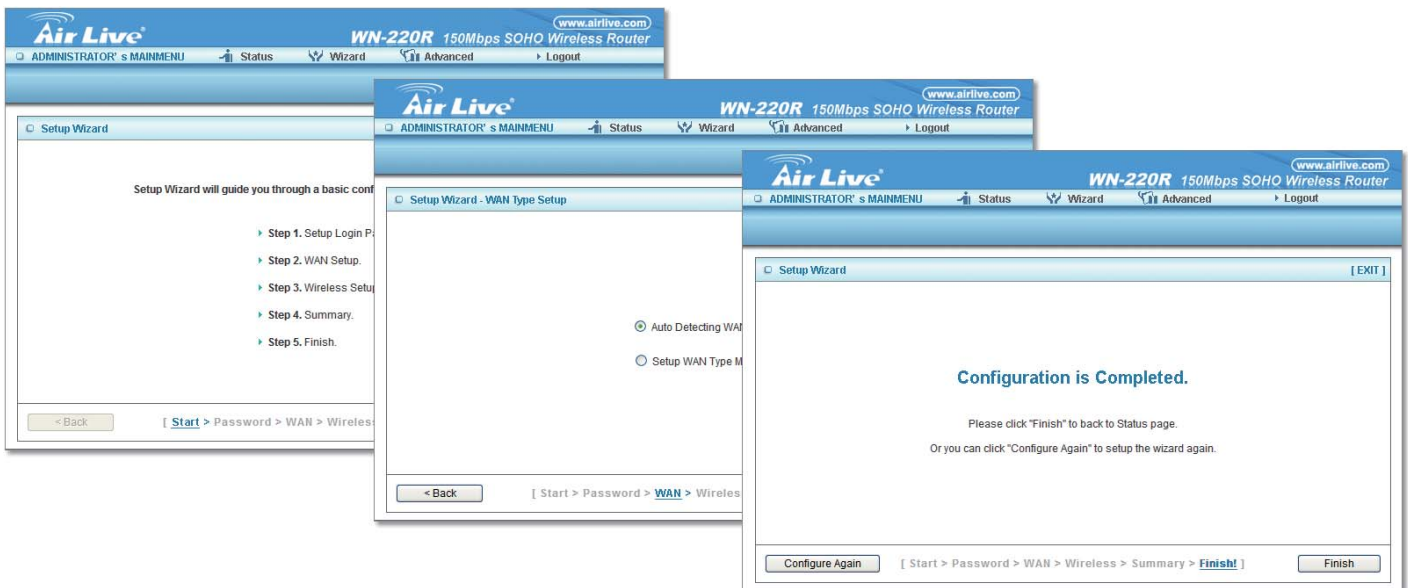


Support Green WLAN for Smart Tx Power Saving, Implicit Rx Power Saving and CPU Offload

Traditional networking devices transmit at 100% full power, regardless of the user environment. In real user scenarios this amount of power is rarely required. Airlive automatic power-saving technologies enable solutions that conserve energy by recognizing the actual user scenario and adjusting the power accordingly in relation to distance, data traffic, and link status, and with no loss of performance.

Support Easy Setup Wizard

With AirLive Setup Wizard, user can setup his wireless network easily by following the instructions shown on screen. Both wireless setting, such as SSID and Encryption method, and WAN setting, such as PPPoE account and password, could be done in one Wizard.



Specifications

Hardware

Ethernet WAN

- RJ-45 port, 10/100Mbps, auto-MDI/MDIX

Ethernet LAN

- RJ-45 port, 10/100Mbps, auto-MDI/MDIX

WPS Button

- For WPS connection

Reset Button

- Reset router setting to factory default

LED Indication

- Status / WAN / LAN1 ~ LAN4/ Wireless

Power Jack

- DC Power Jack, powered via external DC 5V/1A switching power adapter

Wireless LAN (WiFi)

Standard

- IEEE 802.11b/g/n (1x1) compliance

SSID

- SSID broadcast or in stealth mode

Channel

- Auto-selection, manually

Security

- WEP, WPA, WPA-PSK, WPA2, WPA2-PSK

WPS

- WPS (Wi-Fi Protected Setup)

WMM

- WMM (Wi-Fi Multimedia)

Functionality

Ethernet WAN

- PPPoE, DHCP client, Static IP

WAN Connection

- Auto-reconnect, dial-on-demand, manually

One-to-Many NAT

- Virtual server, special application, DMZ

NAT Session

- Support NAT session: 10000

SPI Firewall

- IP/Service filter, URL blocking, MAC Control

DoS Protection

- DoS (Deny of Service) detection and protection

Routing Protocol

- Static route, dynamic route (RIP v1/v2)

Management

- SNMP, UPnP IGD, syslog, DDNS

Administration

- Web-based UI, remote login, backup/restore setting

Performance

- NAT up to 90Mbps and Wireless up to 70Mbps

Environment & Certification

Package Information

- WN-220R, DC 5V/1A power adapter, Quick Installation Guide

Operation Temp.

- Temp.: 0~40°C, Humidity 10%~90% non-condensing

Storage Temp.

- Temp.: -10~70°C, Humidity: 0~95% non-condensing

EMI Certification

- CE/FCC compliance

RoHS

- RoHS compliance

Ordering Information:

AirLive WN-220R 150Mbps SOHO Wireless Router